



Product Service

CERTIFICATE

No. Z2 15 10 87513 007

Holder of Certificate: Perfect Galaxy International Limited

4/F Block C, Sea View Estate, 2-8 Waston Road
North Point
HONG KONG



Certification Mark:

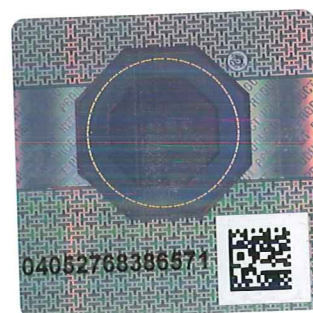


Product: Converter
(PV grid-connected inverter)

The product was tested on a voluntary basis and complies with the essential requirements. The certification mark shown above can be affixed on the product. It is not permitted to alter the certification mark in any way. In addition the certification holder must not transfer the certificate to third parties. See also notes overleaf.

Test report no.: 64290150327901

Valid until: 2020-10-18



Frank Zhu

Date, 2015-10-19 (Frank Zhu)

Page 1 of 2



CERTIFICATE

No. Z2 15 10 87513 007

Model(s): **EQX0750xx320yy, EQX0850xx360yy,
EQX1000xx400yy
(xx=EV, PV; yy=XF, XP, XN)**

Parameters:

Maximum PV array open-circuit voltage (Vdc):	1000
Maximum total PV array short-circuit current (A):	EQX0750xx320yy (1871); EQX0850xx360yy (1893); EQX1000xx400yy (2028)
Maximum operating PV input current (A):	EQX0750xx320yy (1701); EQX0850xx360yy (1721); EQX1000xx400yy (1844)
PV input operating voltage range (Vdc):	EQX0750xx320yy (500-850); EQX0850xx360yy (560-850); EQX1000xx400yy (615-850)
Nominal output voltage (Vac):	EQX0750xx320yy (3~320); EQX0850xx360yy (3~360); EQX1000xx400yy (3~400)
Nominal output frequency (Hz):	50
Maximum continuous output current (A):	EQX0750xx320yy (1353); EQX0850xx360yy (1363); EQX1000xx400yy (1443)
Nominal active power Pn (kw):	EQX0750xx320yy (750); EQX0850xx360yy (850); EQX1000xx400yy (1000)
Power factor (Full load):	>0.99
Ingress protection:	IP54
Protect class:	I

-The digit xx can be EV, PV standing for different markets.
-The digit yy can be XF, XN, XP standing for the grounding type designation:
XF = floating input, DC "not" bonded to ground ;
XN = negative ground bonded (only applicable according country specific standards) ;
XP = positive ground bonded (only applicable according country specific standards).

Tested

according to:

IEC 62109-1(ed.1)
EN 62109-1:2010
IEC 62109-2:2011(ed.1)
EN 62109-2:2011

Production Facility(ies):

87505